



HWS HOUSING AND
WORKFORCE
SOLUTIONS
ENGAGE. ENCOURAGE. EQUIP.

2023

Riverside County
Continuum of Care

HOMELESS POINT-IN-TIME COUNT Summary

The federally mandated count of people experiencing sheltered and unsheltered homelessness on a single night was conducted January 25, 2023. The data collected is used to demonstrate the need for services, resource planning, and to inform the community about homelessness.

More than a Count



2023 POINT-IN-TIME COUNT

3,725 total

12% Increase from 3,316 (2022 PIT Count)

Unsheltered 2,441

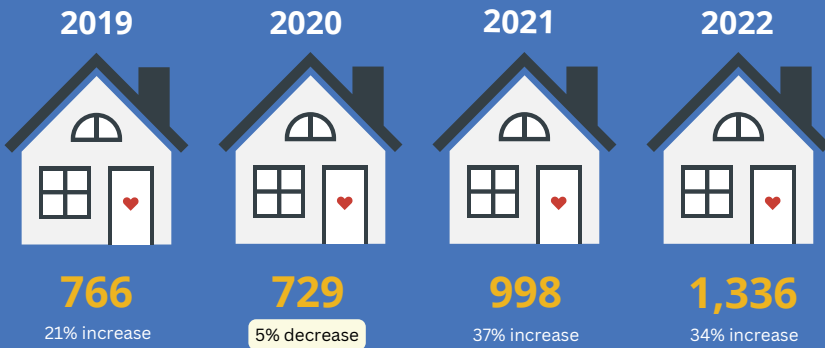
23% Increase from 1,980 (2022 PIT Count)

Sheltered 1,284

4% decrease from 1,336 (2022 PIT Count)

Sheltered Annual Totals

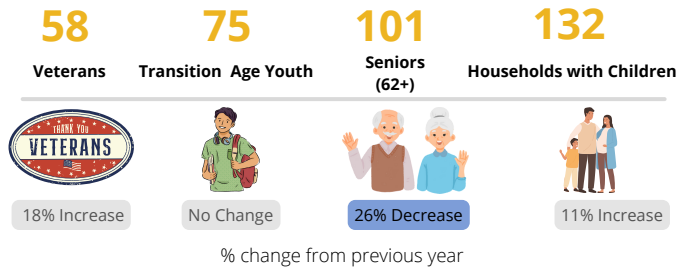
and % change from previous year



1,284 Sheltered Total

By Supervisory	District
District 1	396
District 2	112
District 3	206
District 4	406
District 5	164

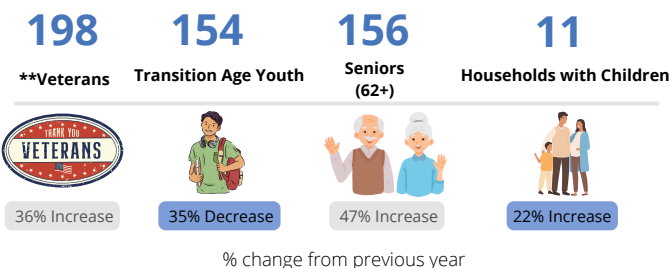
Subpopulation



2,441 Unsheltered Total

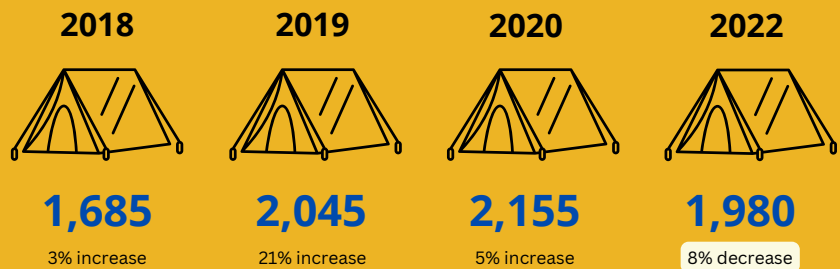
By Supervisory	District
District 1	742
District 2	260
District 3	131
District 4	755
District 5	553

Subpopulation



Unsheltered Annual Totals

and % change from previous year



*2021 Unsheltered PIT Count was not conducted as a result of COVID exemption

** number reported is extrapolated, total unsheltered interviewed veterans is 100 (30% increase from 2022)

SUB-POPULATION TOTALS



256
Veterans

31% Increase



143
Households
with Children

12% Increase



229 Transition
Age Youth (18-24)

27% Decrease



257
Seniors 62+

6% Increase

21%

Unsheltered
Persons
Experiencing First
Time Homelessness

Top 3 Primary Factors Contributing to Unsheltered Homelessness Reported

- 1.** Family Disruption 27%
- 2.** Lack of Income 19%
- 3.** Unemployment 12%

MORE THAN A COUNT INITIATIVE



32% of surveyed
individuals requested
post-count services



784 individuals referred to
services



Top 3 requested services

- 1.** Housing Services
- 2.** CalFresh & Cashaid
- 3.** Food Pantries

District and City Breakdown

*Data displayed is based on newly adopted district boundaries



District 1			
	Unsheltered 2023	Sheltered 2023	Total
Perris	90	24	114
Riverside	605	372	977
Wildomar	10	36	46
Unincorporated	47	0	47
Total	752	432	1184
District 2			
	Unsheltered 2023	Sheltered 2023	Total
Canyon Lake	0	0	0
Corona	65	50	115
Eastvale	7	18	25
Jurupa Valley***	79	3	82
Norco	13	9	22
Lake Elsinore	78	32	110
Unincorporated	18	0	18
Total	260	112	372
District 3			
	Unsheltered 2023	Sheltered 2023	Total
Menifee	25	0	25
Murrieta	33	132	165
Temecula	35	38	73
Unincorporated	28	0	28
Total	121	170	291
District 4			
	Unsheltered 2023	Sheltered 2023	Total
Blythe	105	7	112
Cathedral City	40	5	45
Coachella	67	7	74
Desert Hot Springs	107	15	122
Indian Wells	0	0	0
Indio	108	319	427
La Quinta	4	0	4
Palm Desert	39	0	39
Palm Springs	239	29	268
Rancho Mirage	3	0	3
Unincorporated	43	24	67
Total	755	406	1161
District 5			
	Unsheltered 2023	Sheltered 2023	Total
Banning	40	50	90
Beaumont	33	0	33
Calimesa	8	0	8
Hemet	207	66	273
Moreno Valley	77	24	101
San Jacinto	120	24	144
Unincorporated	68	0	68
Total	553	164	717



IMPACT REPORT

FY 2022/2023



More
Shelter Beds

Emergency Shelter
Enrollments
4,860

STREET OUTREACH
Enrollments
6,250

Outreach

More
Permanent
Housing

Permanently Housed
Enrollments
4,685

SAR ENCAMPMENT
RESPONSE
Enrollments
271

Encampment
Response

HOMELESSNESS PREVENTION
Persons Impacted (HMIS & United Lift- 8,111)
10,080

HOMELESS FUNDING & PROGRAMS FOR RIVERSIDE COUNTY

HUD CoC
\$14.2M 20 Projects

GESH
\$1.4M 4 Projects

ESG & ESG CV
\$1.7M 4 Projects

CONTINUUM OF CARE
TOTAL \$62M

HHAP
\$9.7M 30 Projects

HHIP
\$35M 31 Projects

HUD-VASH
\$6.8M 798 Vouchers

MAINSTREAM
\$1.8M 203 Vouchers

HOUSING AUTHORITY
TOTAL \$87.7M

Family Unification Program
\$1.5M 180 Vouchers

Housing Choice Voucher
\$77.6M 9,068 Projects

Homekey
\$29M 183 Housing Units

CDBG, ESG & ESG-CV
\$8.7M 25 Projects

**HOUSING & COMMUNITY
DEVELOPMENT**
TOTAL \$320.7

County Funding
\$236.9M 1,808 Housing Units

United Lift
\$55.1M 8,111 Households